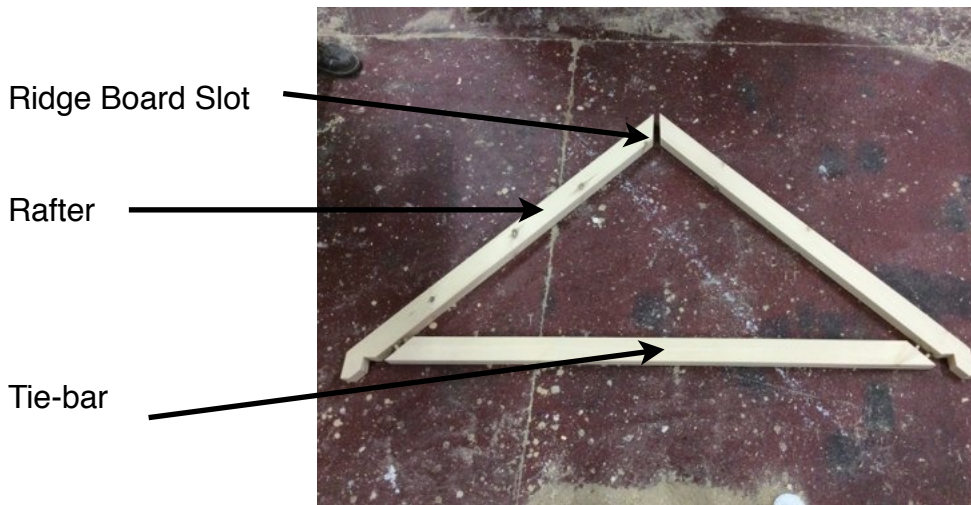
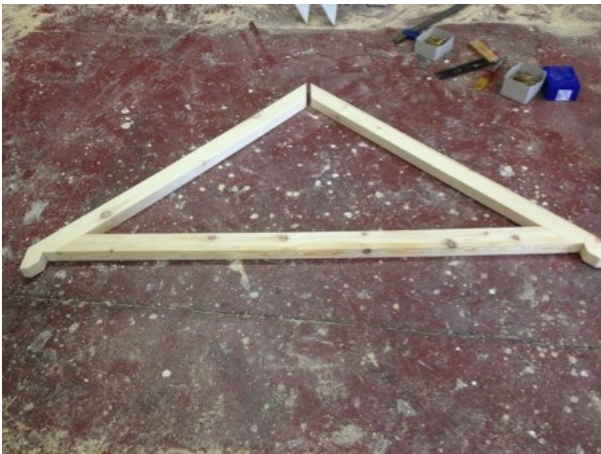


# RMJM Joinery Ltd - Apex Canopy Assembly

## Step 1 = Back Truss

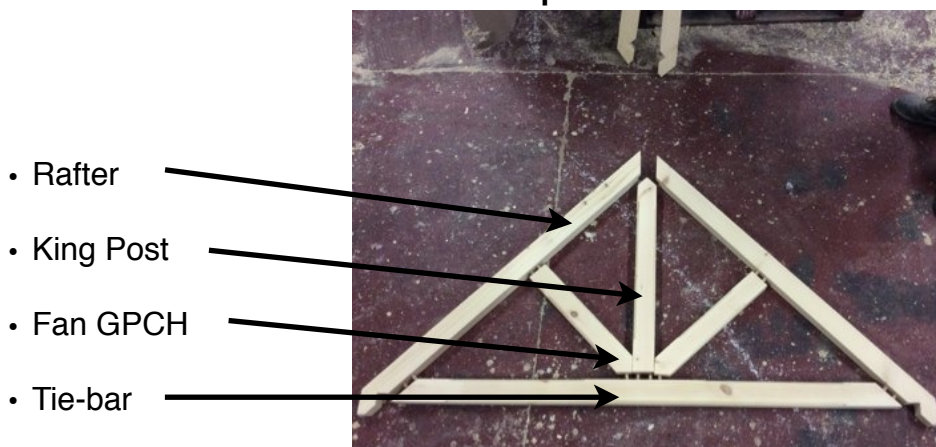


## Step 2 = Assembling the Back Truss.



- Dry Fit the Back Truss together making sure all joints will pull up.
- Now un-assemble the truss and add glue to the shoulder and dowels.
- Reassembly the truss and fix using the screws provided through the pre-drilled holes.

## Step 3 = Front Truss.

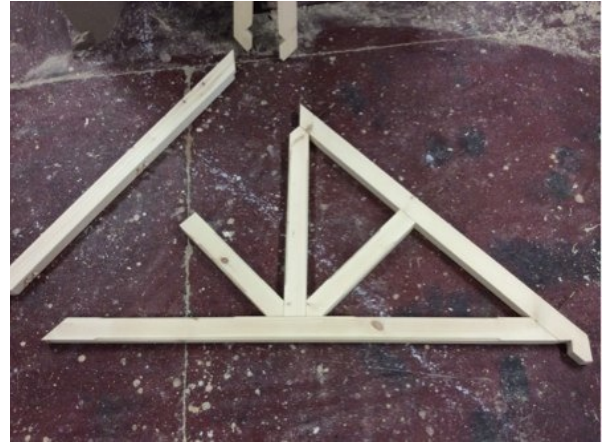


## RMJM Joinery Ltd - Apex Canopy Assembly

### Step 4 = Assembling the Front Truss.



- Dry Fit the Front Truss together making sure all joints will pull up.



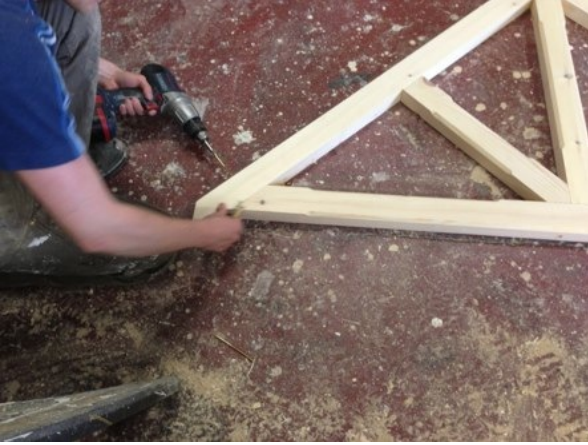
- Now un-assemble the truss and add glue to the shoulders and dowels.
- Reassemble the truss making sure all the joints are together.



- Now fix the truss to the upright using the fixing supplied through the pre-drilled holes.



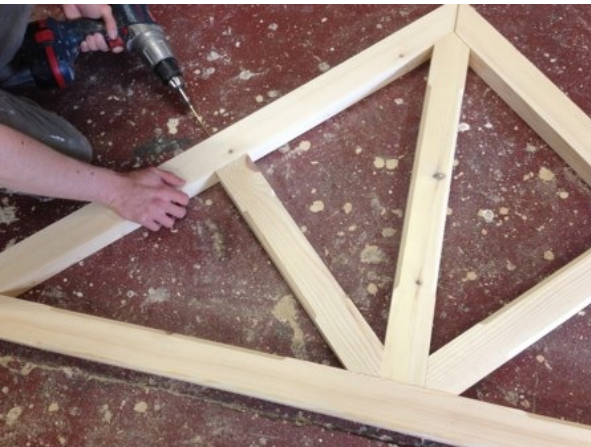
## RMJM Joinery Ltd - Apex Canopy Assembly



- Now fix the Rafters to the Tie-Bar using the fixing supplied through the pre-drilled holes.



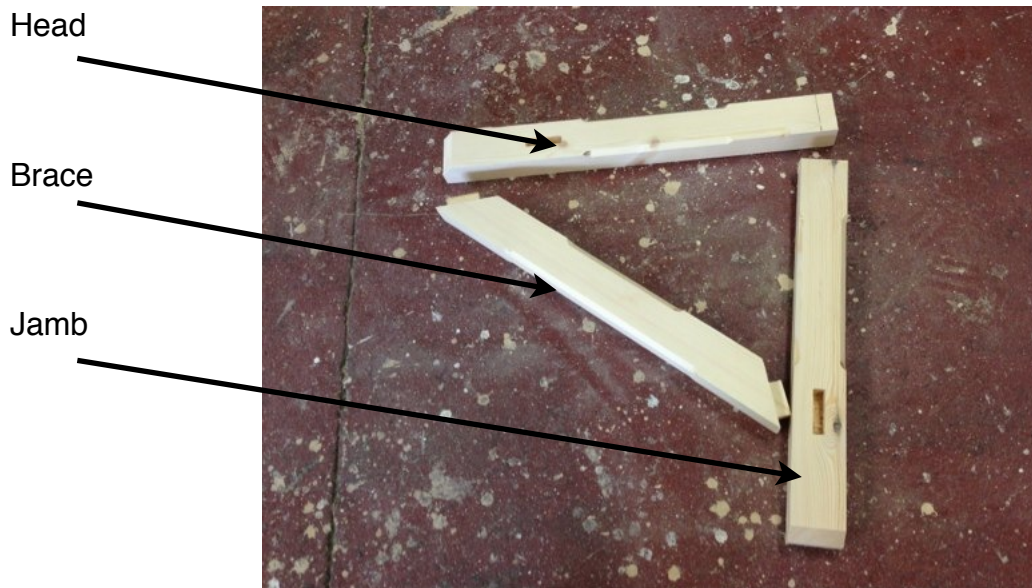
- Now fix the fan through the pre-drilled holes and plug the holes (clean excess plug off).
- When there is only an upright fix the upright in the same way.



- Now fix the fan through the rafter using the fixing supplied through the pre-drilled holes.
- The canopy is now ready to be fixed to the building.

## RMJM Joinery Ltd - Apex Canopy Assembly

### Step 1. = Assembling the Gallows Bracket.



- The Head = This is the top section of the Gallows Bracket this part normally sits under the porch.
- The Brace = This is the cross section that gives the bracket its support.
- The Jamb = This is the section that runs down the side of the building and is fixed to the wall using the appropriate fixing.

### Step 2. = Make sure all the mortices are clear.





## RMJM Joinery Ltd - Apex Canopy Assembly

- Dry fit all the joints together to make sure the bracket will go together



- Ensure all joints can be pulled closed and that the Jamb can be lined up with the manufacture mark.

### Step 3 = Adding glue to all joints.





## RMJM Joinery Ltd - Apex Canopy Assembly

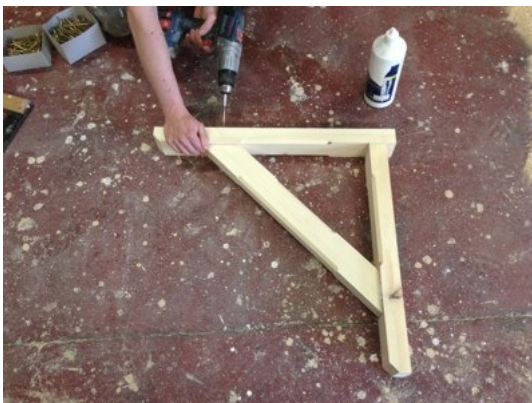
### Step 4 = Fixing the Bracket together.



- Push the bracket back together
- Fix the bracket together at the Head & Jamb Joint using the screws provided.



- Once the Head & Jamb joint is fixed ensure that the joint is square.
- If the joint is not square use a clamp to make the bracket square.



- Once the bracket is square fix the remainder of the joints using the screws provided making sure the bracket remains square at all times

# RMJM Joinery Ltd - Apex Canopy Assembly

## Contents List.

Item	Section	Qty
Front Rafters	70 x 45	2
Back Rafter	70 x 45	2
Tie-Bar	70 x 45	2
King Post	70 x 45	1
Fan	70 x 45	2(Hampton Only)
Purlings	70 x 45	2(1600 Version Only)
Ridge Board	95 x 20	1
Gallows Bracket - Jamb	70 x 45	2
Gallows Bracket - Head	70 x 45	2
Gallows Bracket - Brace	70 x 45	2
Plugs	12mm	4(Hampton) - 2(Kingsmead)
Dowels	10 x 40	9
Screws(Canopy)	100 x 5.0	26(1200v) - 34(1600v) Hampton 18(1200v) - 26(1600v) Kingmead
Screws(Gallows Bracket)	80 x 5.0	12