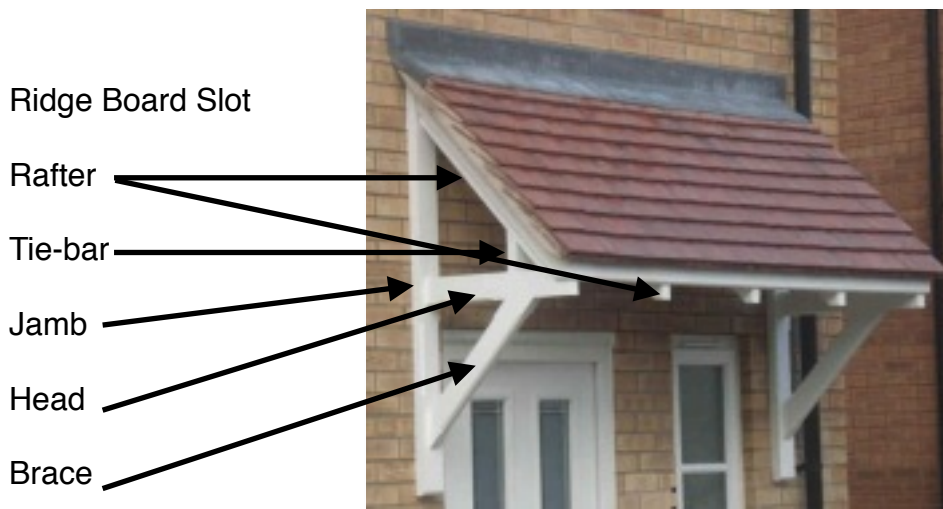


Mono Canopy Assembly

Windsor Mono Door Canopy.



Step 1 = Assembling the Gallows Bracket Section.



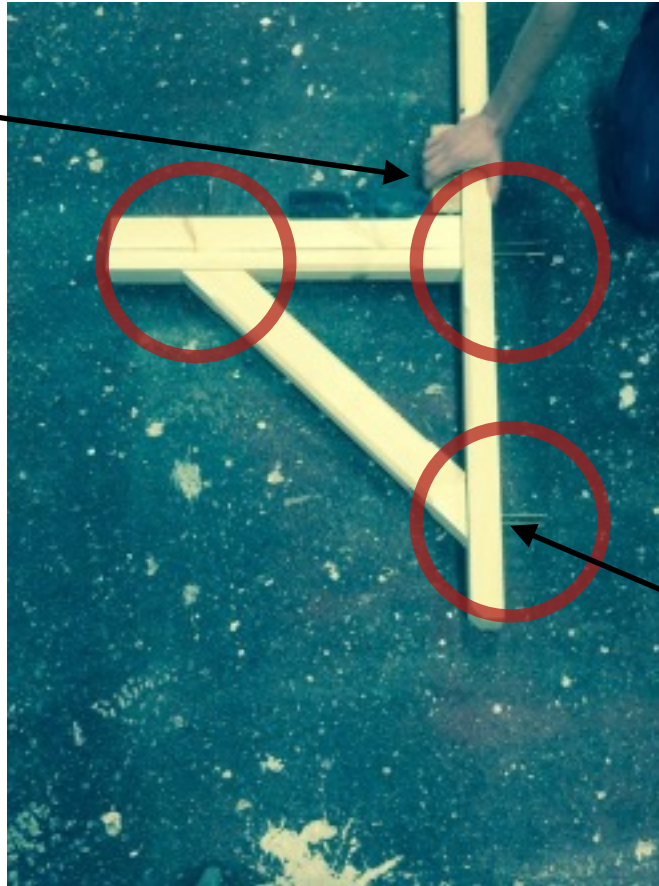
- Place all the components on a flat surface and position them like the image above
- Dry Fit the Gallows Bracket section together making sure all joints will pull up.
- Now un-assemble and add glue to the shoulder.



Mono Canopy Assembly

Step 2 = Squaring up the Gallows Section.

Make sure the Bracket is square.



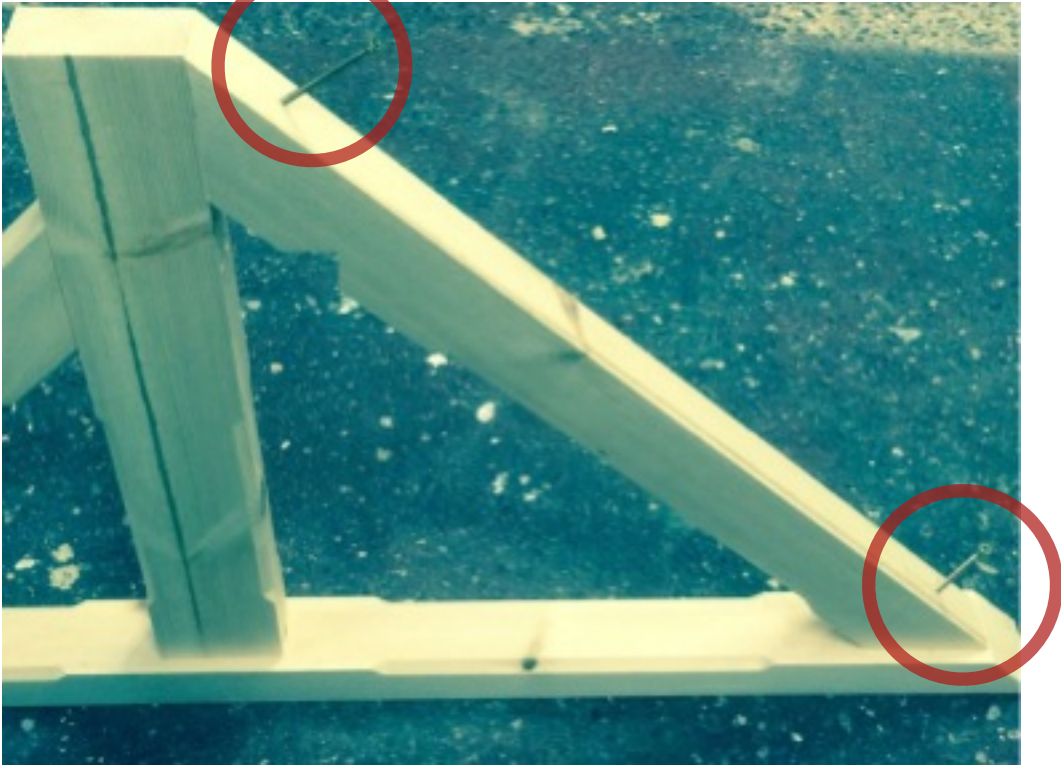
Screws used
80 x 5.0

- Now the glue has been applied push all the joints back together and place the screws in the pre-drilled holes as shown on the image.
- Make sure the Head is square to the Jamb section as shown above.



Mono Canopy Assembly

Step 2 = Fitting the End Rafter.



- Place the end rafter into its position above the head of the Gallows Bracket
- Screw the rafter into position as shown in the image making sure the rafter is aligned to the centre of the jamb.

The Bracket is now ready to be fitted to the building
Repeat the process on the other Bracket.

Contents List.

Item	Section	Qty
Jamb	70 x 45	2
Tie-Bar	70 x 45	1
Wall Plate	95 x 20	1
Head	95 x 45	2
Gallows Brace	70 x 45	2
End Rafters	70 x 45	2
Mid Rafters	70 x 45	2(1200v) - 3(1600v)
Screws(Canopy)	100 x 5.0	16(1200v) - 18(1600v)
Screws(Gallows)	80 x 5.0	4